

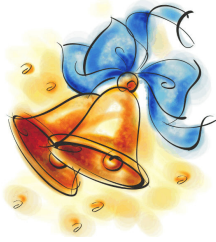


COASTSIDE LUTHERAN CHURCH
900 N. Cabrillo Hwy
Half Moon Bay, Calif. 94019
(650) 726-9293 TELEFAX: (650) 726-9294
info@coastsidelutheran.org * www.coastsidelutheran.org
Reverend Dawn Teuthorn

Wedding Fee Schedule
Non-Member Fees

<u>SANCTUARY USAGE</u> Wedding and rehearsal	\$ 500.00
<u>BUILDING USAGE</u> Reception (West Wing)	400.00
<u>WEDDING COORDINATOR</u> <i>May be waived with Pr.'s approval</i>	300.00
<u>MUSIC ACCOMPANIST</u> (CLC accompanist must be used unless unavailable or other arrangements made with Pastor.	Arranged directly by bride/groom and <i>accompanist</i>
<u>CLC OFFICIANT HONORARIUM</u> Includes 2-3 pre wedding conferences at CLC	400.00
away from CLC <i>additional charge for mileage may also be made.</i>	500.00
<u>OFFICIANT, NON CLC -</u> <i>Approval required by CLC Pastor for use of non-CLC officiant)</i>	
<u>CERTIFICATE OF INSURANCE</u> (FacilityUsePolicy) req'd pre-rehearsal <u>DEPOSIT</u>	\$ 100.00
required to reserve date. All fees must be paid in full prior to wedding	

***Fees are subject to change. Final charges will be confirmed at time deposit is received.
Please note: No furniture or equipment, including piano, paraments, sound equipment,
are to be moved without prior approval. No smoking, No alcohol (except for communion),
No candles are to be used without prior approval/ and then only approved altar candles.
(Fees Revised October 2009)***



COASTSIDE LUTHERAN CHURCH
900 N. Cabrillo Highway
Half Moon Bay, Ca. 94019
(650) 726-9293 Telefax: (650) 726-9294
info@coastsidelutheran.org
www.coastsidelutheran.org

WEDDING FEE SCHEDULE

MEMBER FEES

Wedding Coordinator	\$200.00
Music Accompanist <i>Must use CLC accompanist if available unless otherwise approved by Pastor.</i>	Cost to be arranged <i>directly with accompanist</i>

* Deposit of One hundred (\$100.00) dollars is required to hold date.
All fees must be paid in full prior to the wedding date.

(Fees Revised Jan. 2007)